



tamil nadu slum clearance board  
 Revised Plan  
 Dt. 20.7.2001

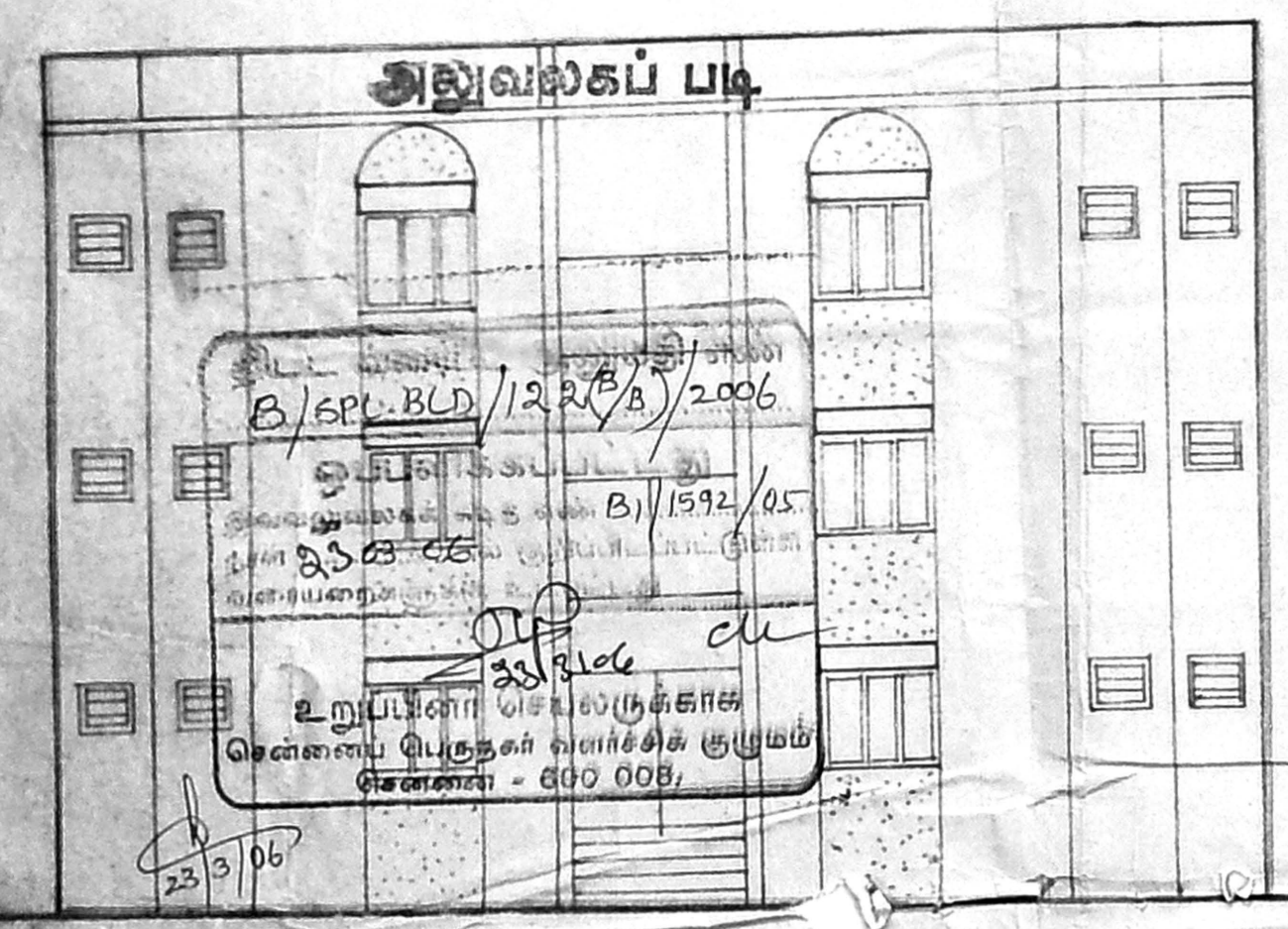
proposed construction of tenements of type design no. 3/2001 (3 storeyed)

scale: 1" = 8'-0" (1:100)  
 CMDA (B)/C No. B1/1592/2005  
 Asst.

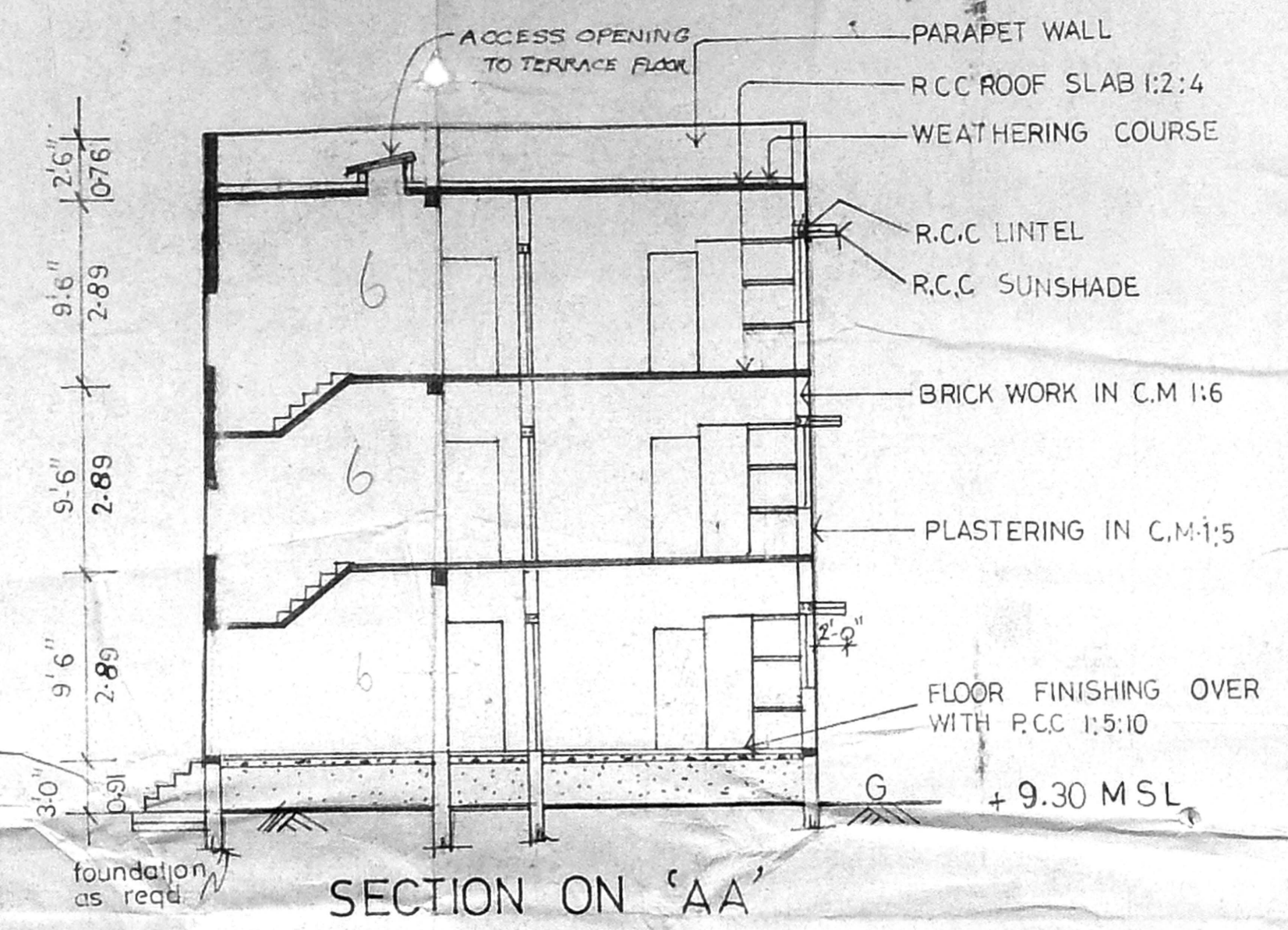
Joinery:

D   Door	3'-0" x 6'-6" (0.91 x 1.98)
Di   "	2'-6" x 6'-0" (0.76 x 1.83)
w   window	4'-6" x 4'-0" (1.37 x 1.22)
v   R.C.C. jally ventilator	2'-0" x 2'-0" (0.61 x 0.61)

plinth area: 234 sq.ft. (or) 21.74 sq.mt/unit

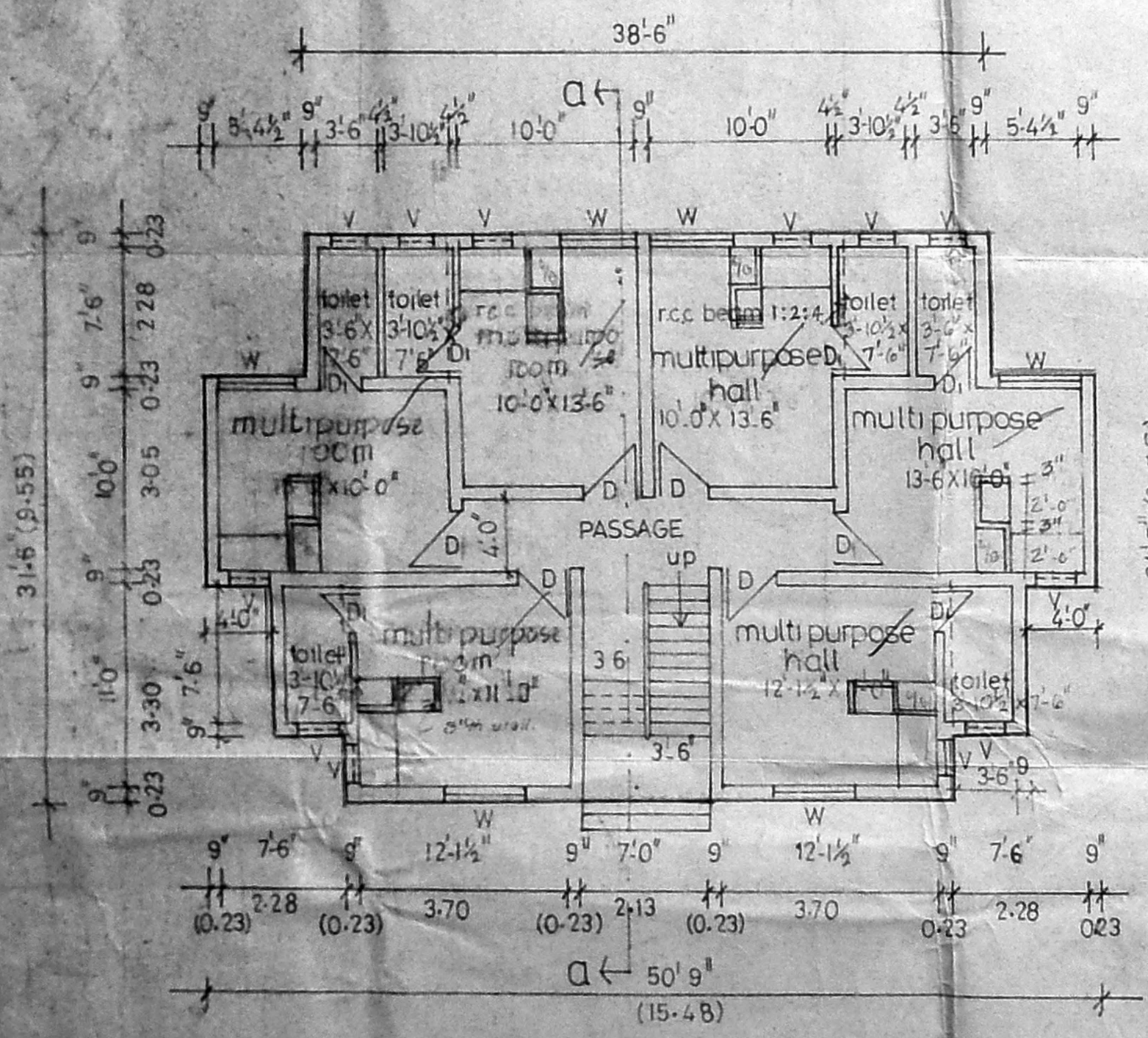


FRONT ELEVATION

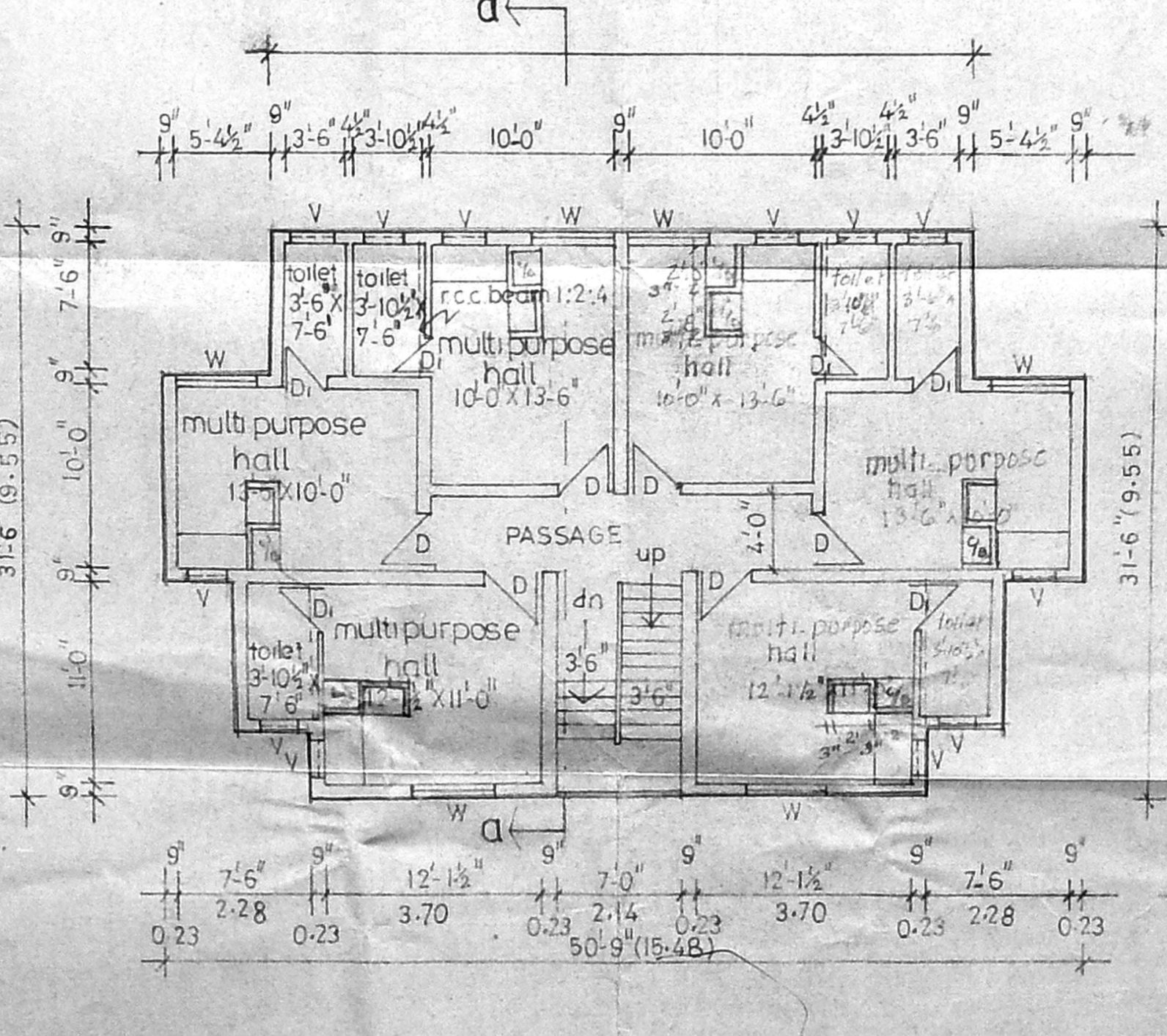


SECTION ON 'AA'

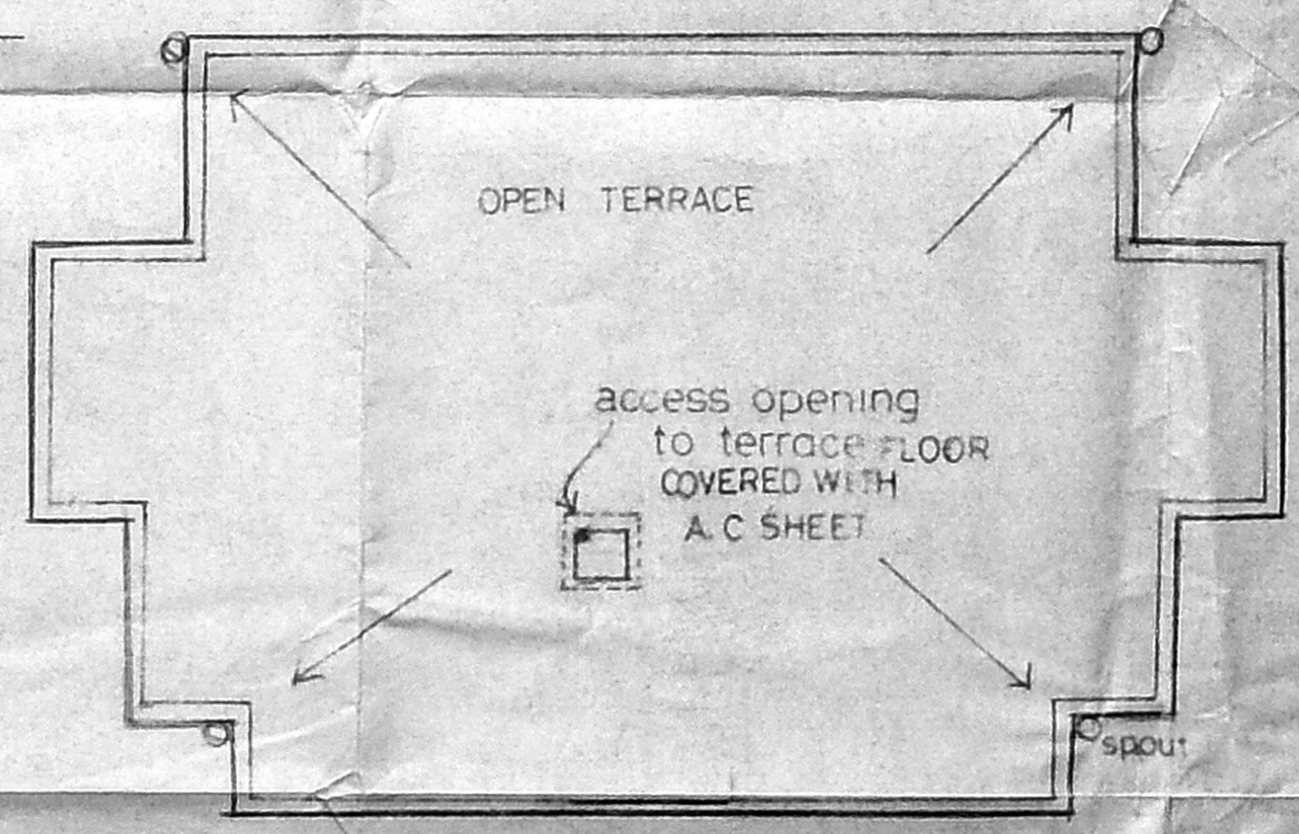
18  
 201 x 18  
 3618 tenements



GROUND FLOOR PLAN



FIRST AND SECOND FLOOR PLAN



TERRACE FLOOR PLAN

/true copy/

asst planner

54 x x x dt. 4.07.2001  
 planning asst. asst planner deputy planner

traced by, M. Muthusai  
 senior planner  
 V. H. Senthil  
 chief engineer

T.S/8/2001